

Quick Reference Guide – LuMon™ System



Adults / Children configuration

for LuMon™ Monitor - Adult with software versions
TIC 1.6.x.xxx / GUI 1.0.x.x

Belt application and initiating monitoring

Switch the LuMon™ Monitor on, check its system settings and confirm date and time.

Connect the SensorBeltConnector to the LuMon™ Monitor and verify that its number displays in system settings. Do not use the SensorBeltConnector, if its number does not display.

Remove all material and wipe away any fluids around the thorax where the striped fabric of the belt will be placed.

Refer to the instructions included in the packaging of the SensorBelt to perform the following three steps:

- 1 Using the measuring tape included in the ContactAgent kit, measure the patient's half underbust girth and determine the SensorBelt size best fitting the patient.
- 2 Obtain a SensorBelt of the recommended size and apply ContactAgent to wet the striped fabric evenly and entirely on the patient-facing side.
- 3 Apply the SensorBelt to the patient.

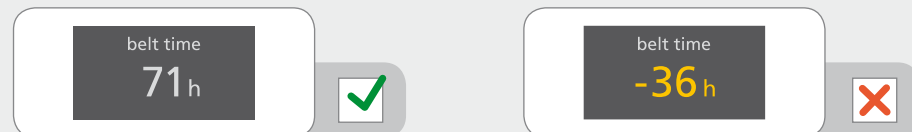
Enter the measured half underbust girth and patient data on the LuMon™ Monitor.

Connect the SensorBeltConnector to the SensorBelt to initiate monitoring.

On the LuMon™ Monitor, verify that the size of the connected SensorBelt matches the recommended size. In case of a mismatch, verify the measured half underbust girth and the chosen belt size.

Checking proper setup

Check the belt time remaining and replace the belt as needed.



Verify the belt positioning and a snug fit of the belt on the skin. If tightening the fit of the belt, ensure not to restrict breathing.

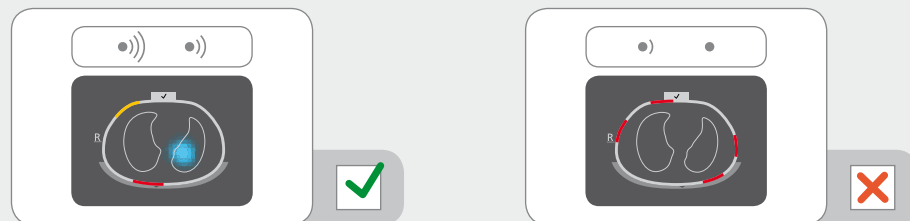


The SensorBelt is positioned correctly when the belt's striped fabric follows the ribs along the 5th/6th intercostal space (ICS) on an oblique plane. The top-end of the mid-line of the belt's back part is close to C7 and the docking station aligned with the patient's sternum.

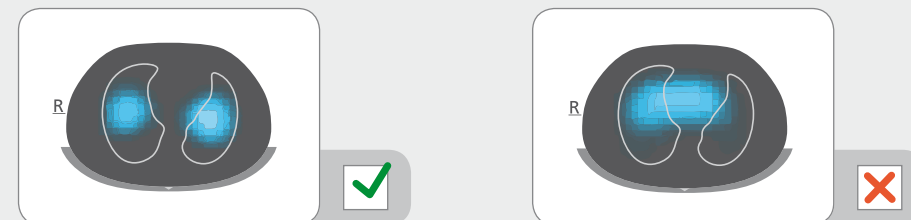
Verify that the half underbust girth and patient data entries on the LuMon™ Monitor correspond to those of the actual patient.

Verify that the displayed rotation image reflects the patient's position – within $\pm 10^\circ$ is acceptable.

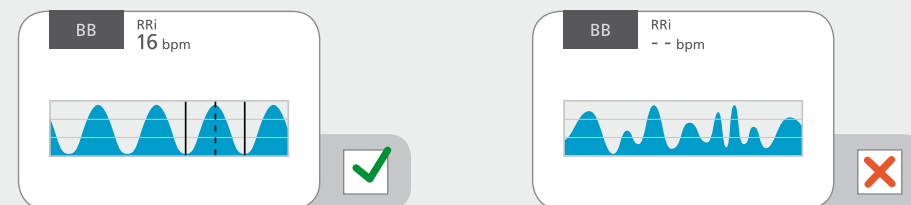
Verify the signal quality and the belt to skin contact quality around the thorax. Though monitoring is possible if the signal quality is weak, the signal quality should preferably be adequate or strong.



Verify that the movie-like display of Global Dynamic Images reflects breathing-related impedance changes mainly within the lung contours.



Check the adequacy of the selected Analysis Mode.



While monitoring the patient

To avoid impaired data quality check proper setup regularly (at least every 8 hours).

Measured data will display in real-time.

Pressing the “event” button will mark an operator event.

The results obtained with the different Analysis Modes and the marked operator events can be reviewed in various trend views.

Ending patient monitoring

Disconnect the reusable SensorBeltConnector from the disposable SensorBelt.

Remove the SensorBelt from the patient and dispose of it according to local regulations for medical waste.

Wipe off ContactAgent residues from the patient.

If desired, review the trend data for the monitored patient.

Switch the monitor off and perform cleaning and disinfection actions on the monitor and SensorBeltConnector before use on the next patient.

Warning

Improper use of the LuMon™ System may lead to patient injury. Therefore, this Quick Reference Guide, the User's Guide for the LuMon™ System and all accessory directions, precautionary information and specifications related to the LuMon™ System should be read and understood before use.



LuMon™ System related manuals and training material are available for online viewing at www.sentec.com/education/eit

