

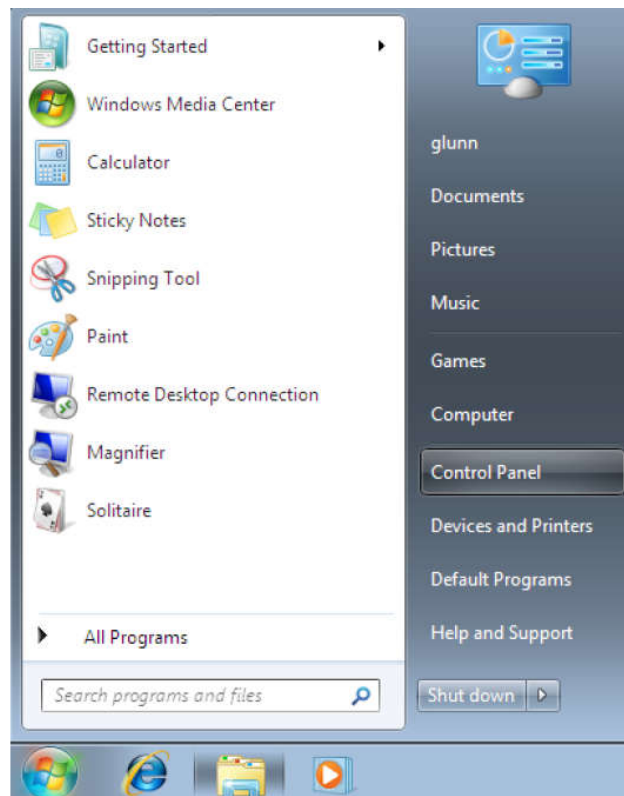
# Installation Guide WINDOWS7/8/10

System Requirement: Support Windows xp/7.0/8.0/10 and MAC OS

10.11-EI Capitan and newer!

Step1: Insert CD Driver of this product to the CD-ROM Connect the device to a spare USB port on your PC.

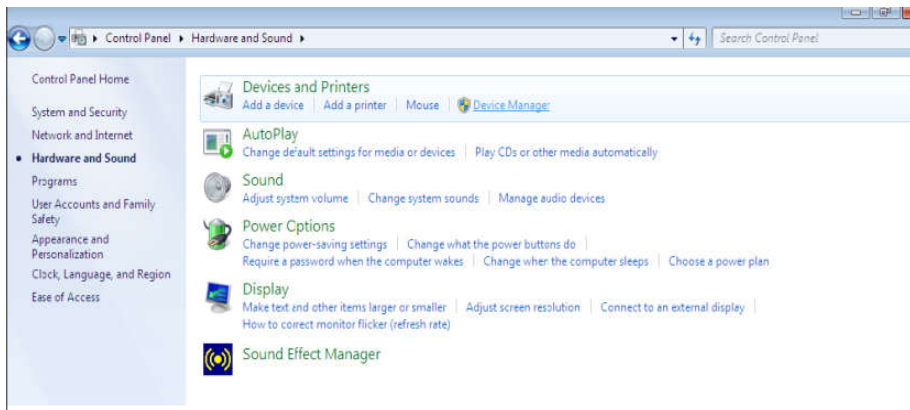
Step2: Press the Windows start button to bring up the start menu and select "Control Panel".



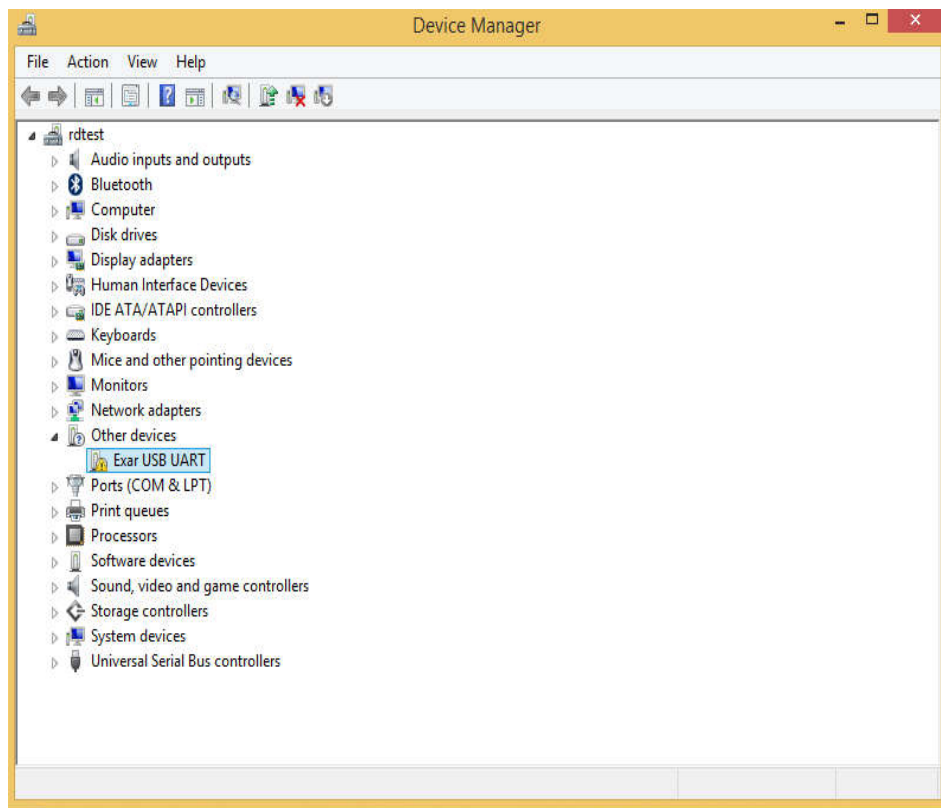
Step 3: From the Control Panel window select Hardware and Sound



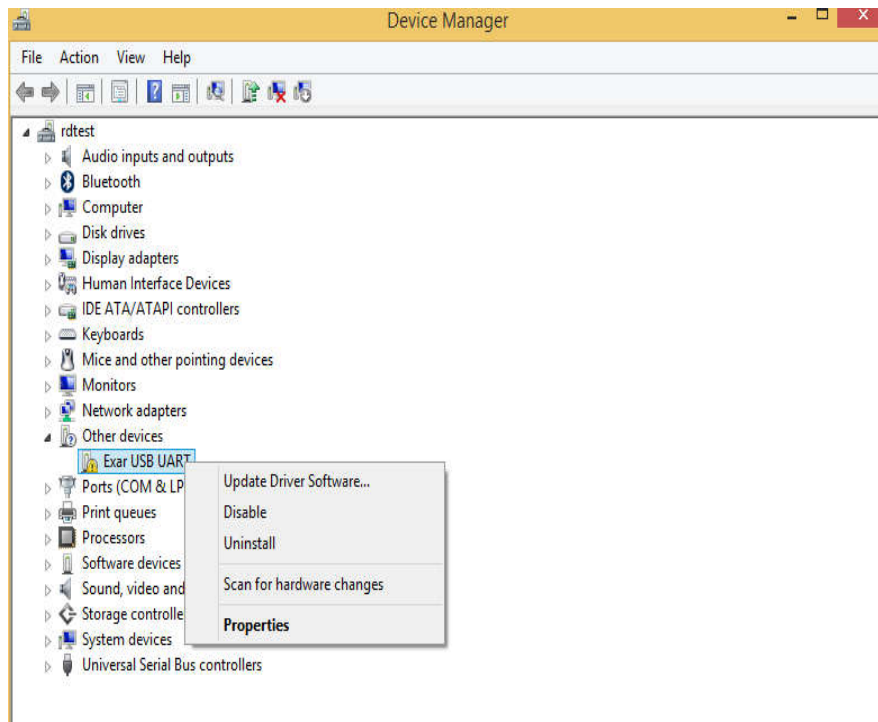
Step4: At the next screen select Device Manager:



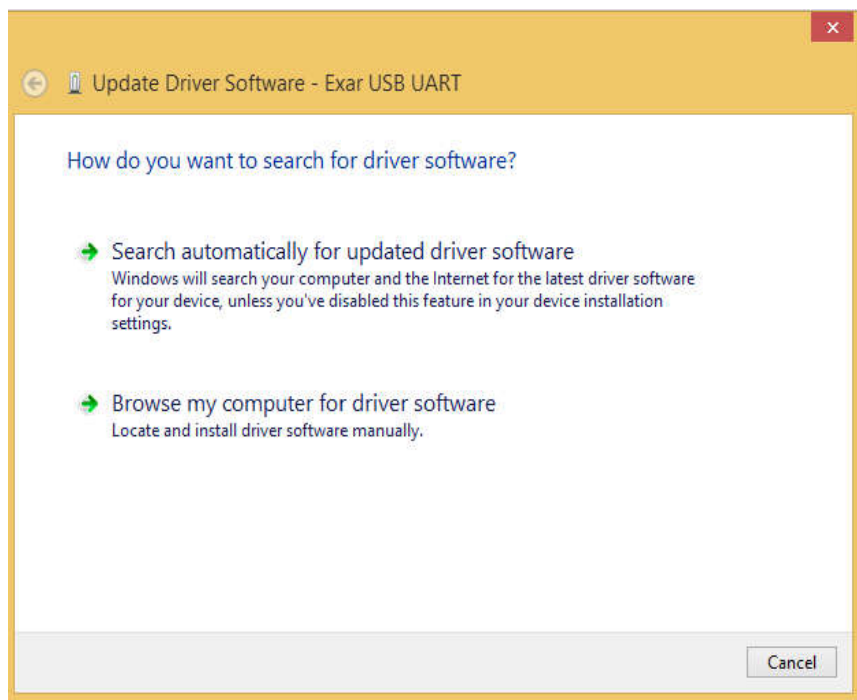
Step 5: In the Device Manager window there will be a device under Other Devices with a yellow warning symbol to indicate a problem ie no driver installed. The text next to this device will depend on the device attached. In this example the devices was “Exar USB UART” devices.



Step6: Right click on the other device to bring up a menu as shown below. From the displayed menu select “Update Driver Software...” This then displays the option for an automatic search or a manual search.

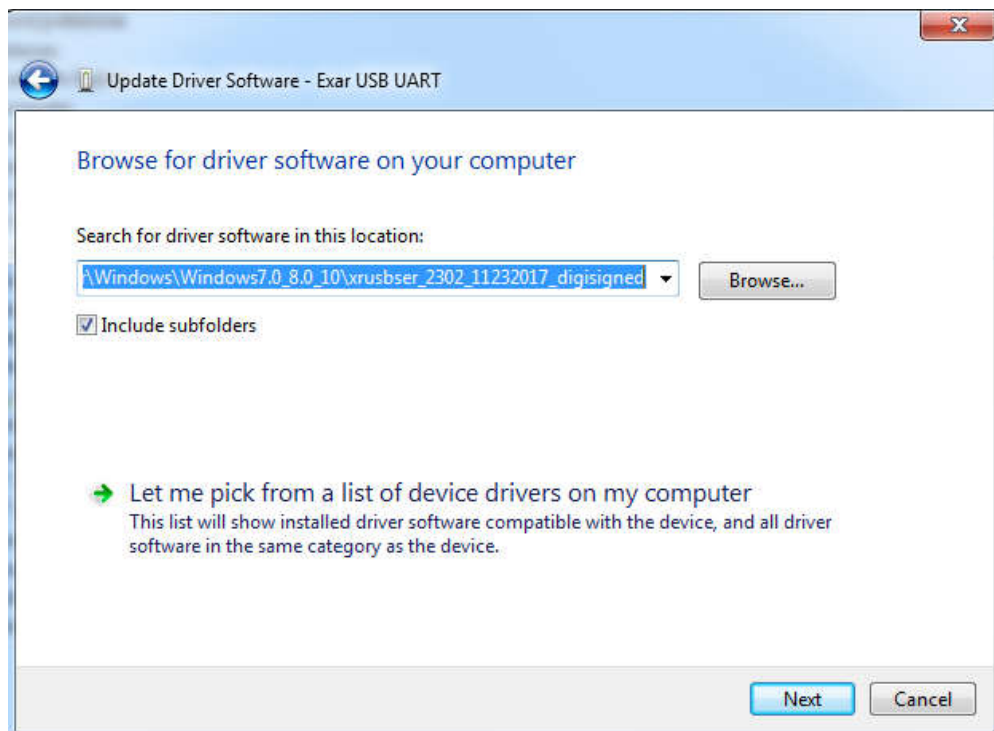


Step7:Select the second option to browse manually.

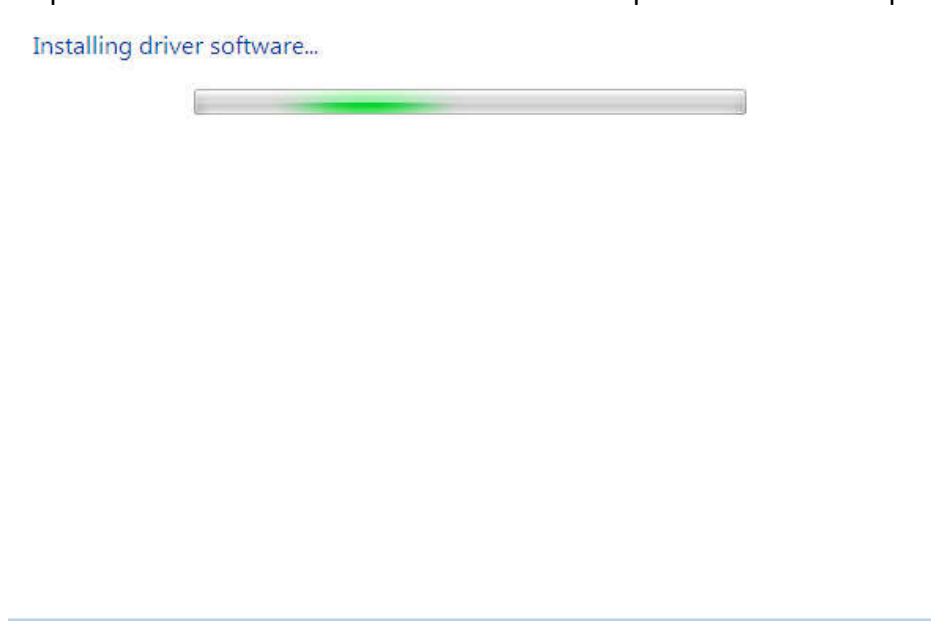


Step 8: click“Browse” and choose the corresponding OS driver in CD. Click “Next” to

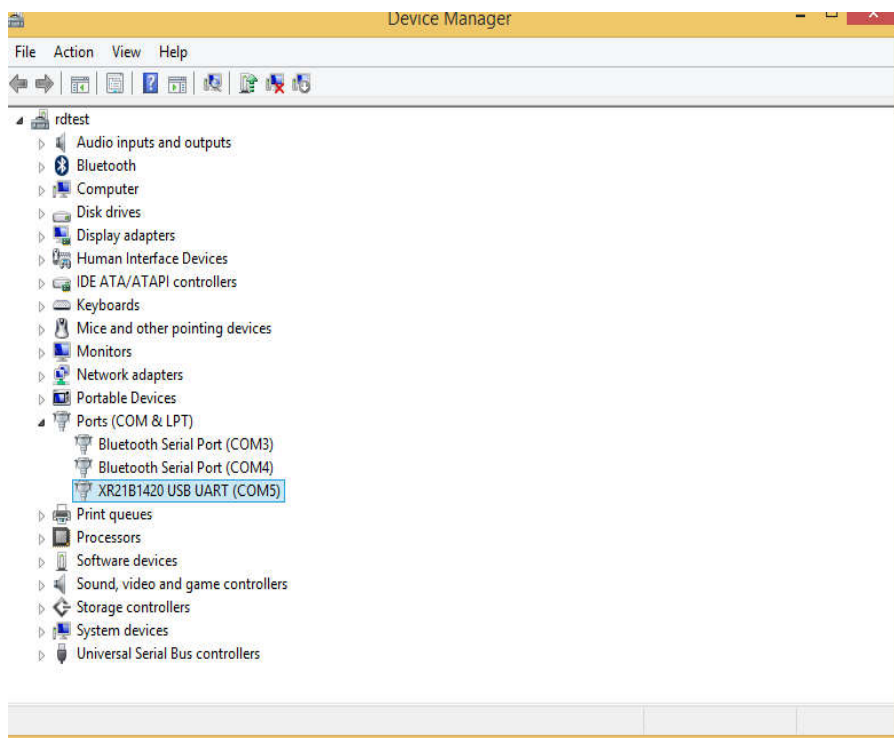
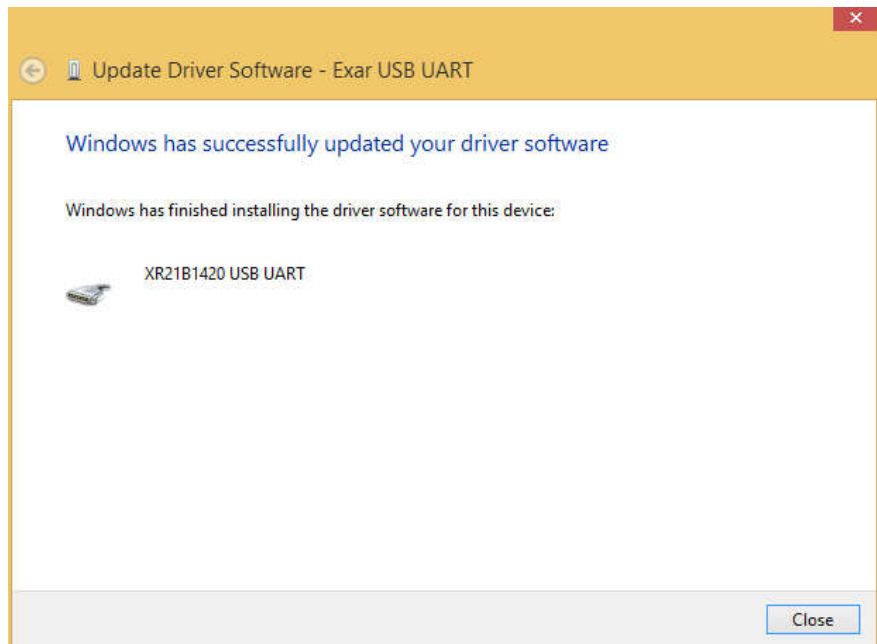
continue



Step 9: When the installation has finished a completion screen is displayed.

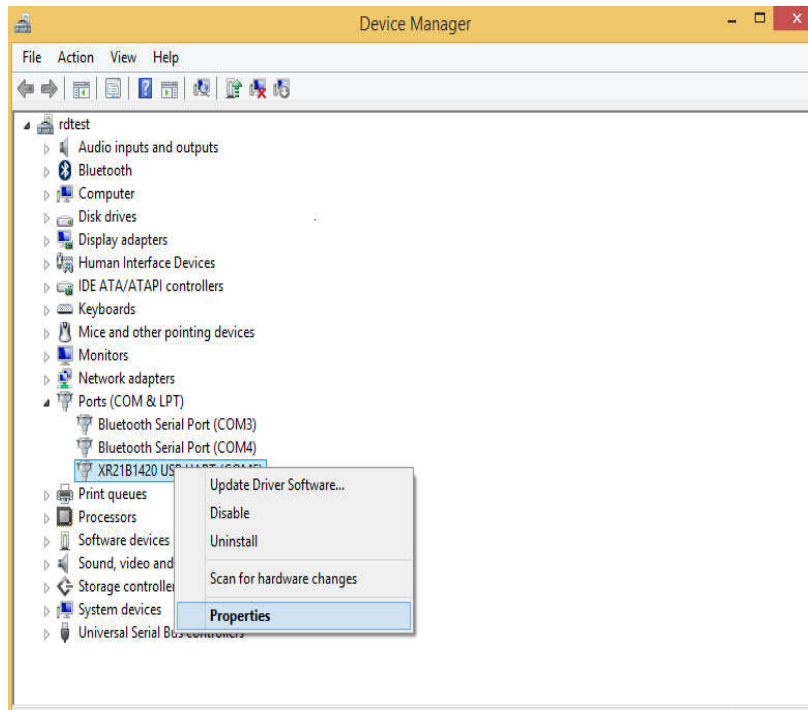


Step10: Press Close to close this window and go back to the Device Manager Window.

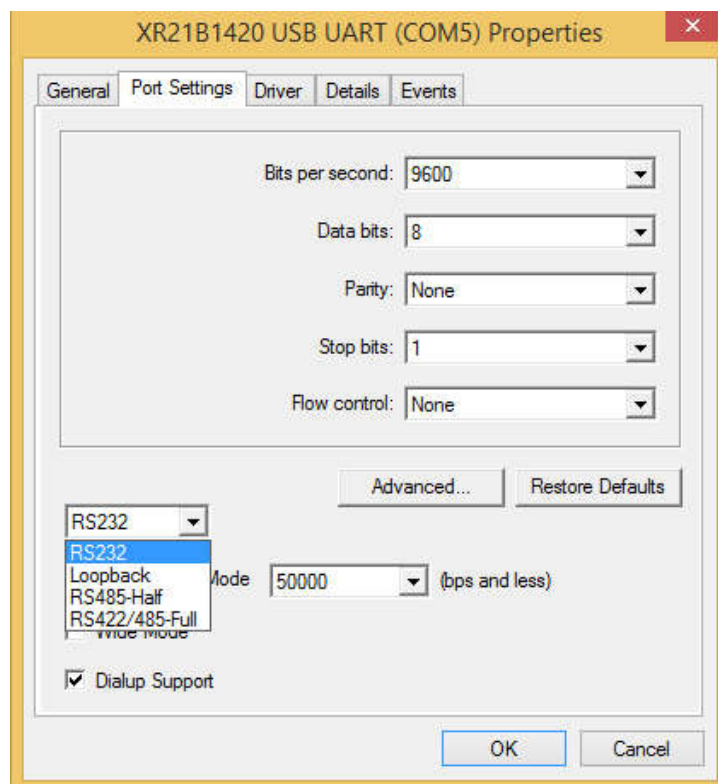


Step11:

Right click on the device to bring up a menu as shown below. From the displayed menu select "Properties"



Step12:click“Port Settings”, There are three mode of work switching in the product

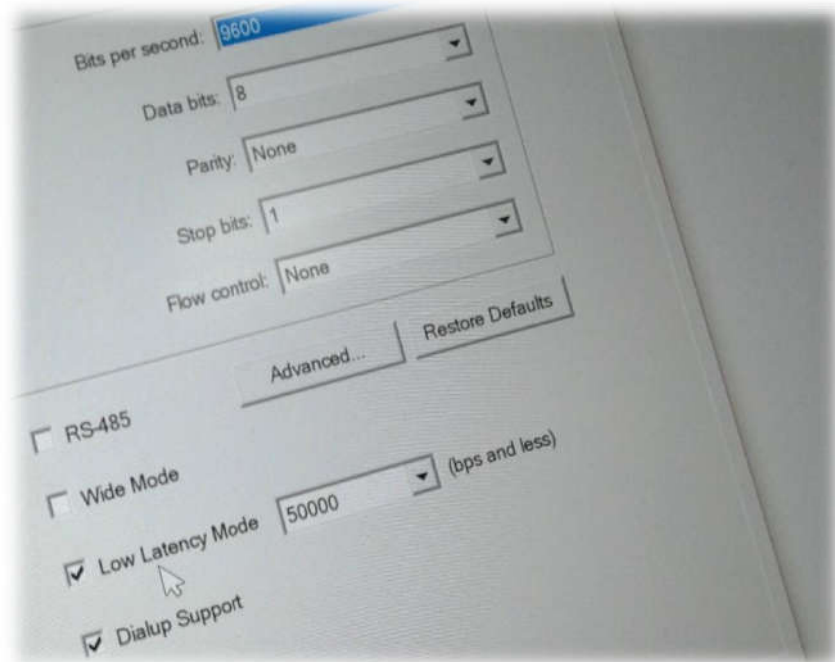


NOTE:

Not all devices will install to COM5. The COM port allocation is determined by the installation wizard on the basis of the next free com port as designated in the PC registry

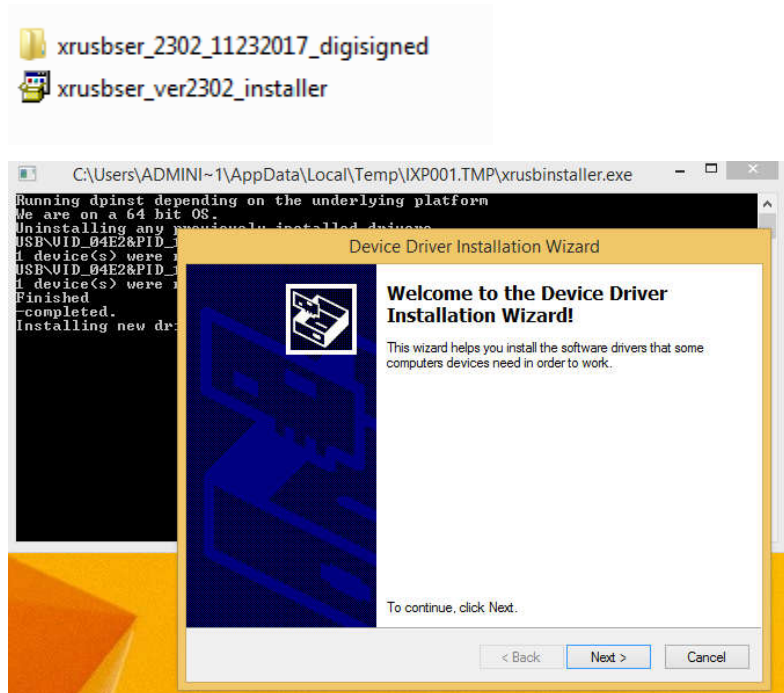
### Important:

If you only see one RS-485 on the interface after installation, that means the installation is not success, you will need to update and install again on the driver path.

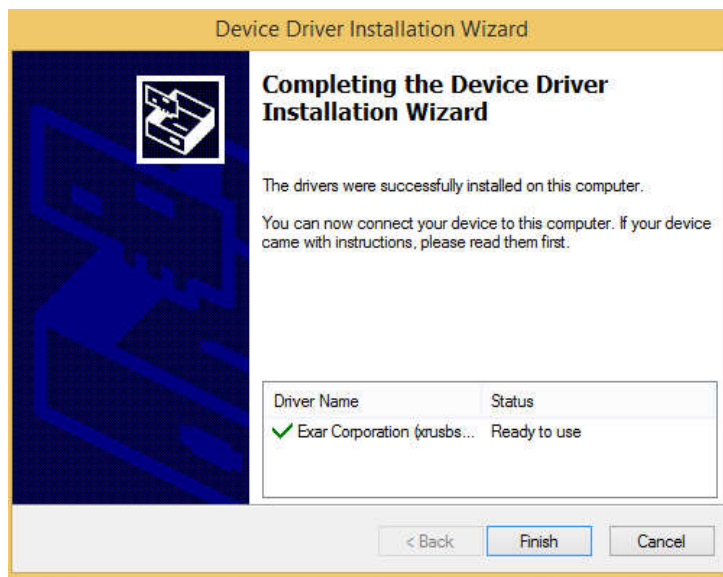


# Installation Guide Windows XP/7/8/10

1. RUN "xrusbser\_ver2302\_install", Located on the Documentation and Software CD-ROM ,Click on the NEXT to begin installing the driver

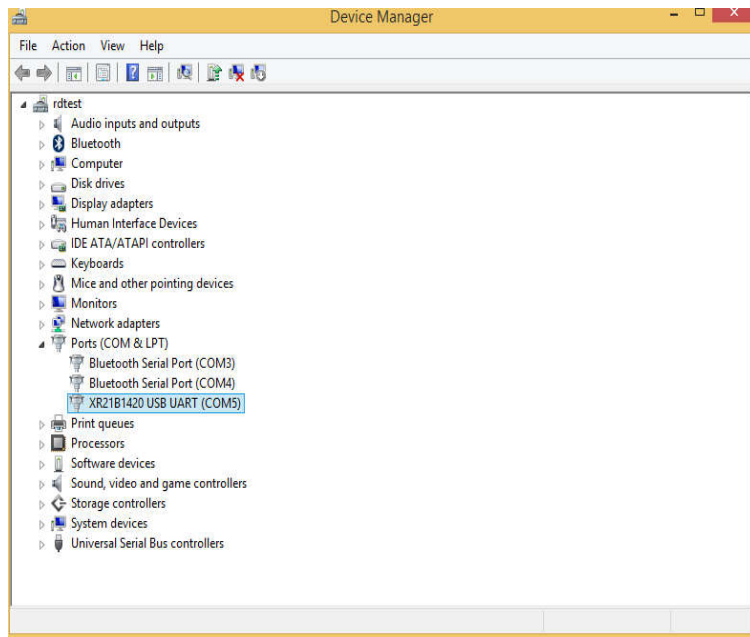


2. The driver will now be automatically installed.
3. Then click Finish to complete the driver installation

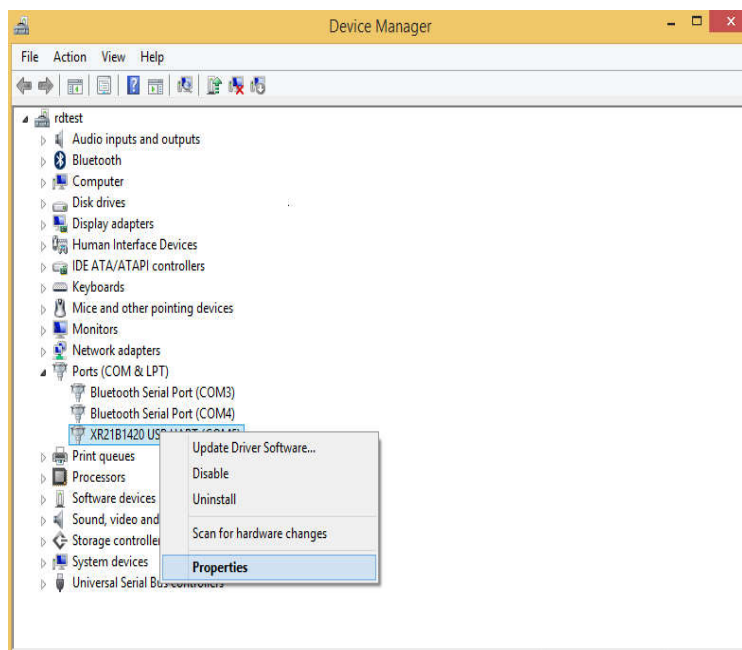


4. Connect the device to a spare USB port on your PC, drivers will be installed and listed in device manager

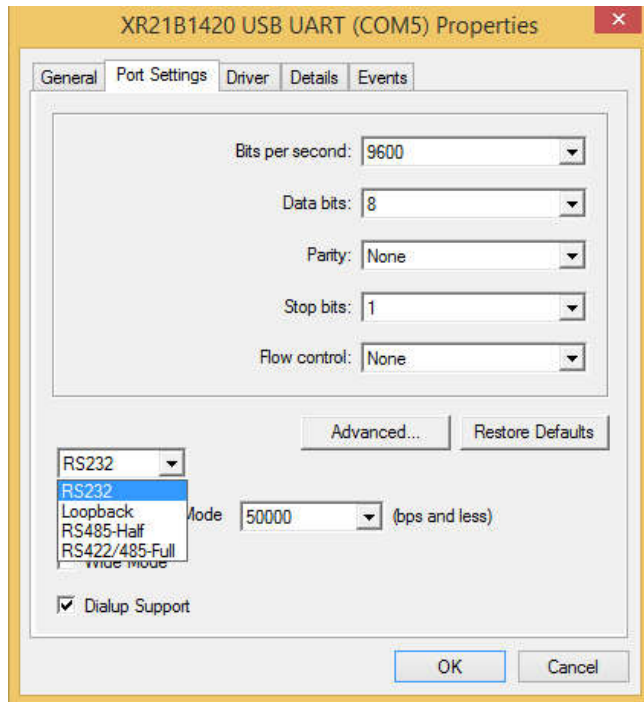




- 5 Right click on the device to bring up a menu as shown below. From the displayed menu select "Properties"

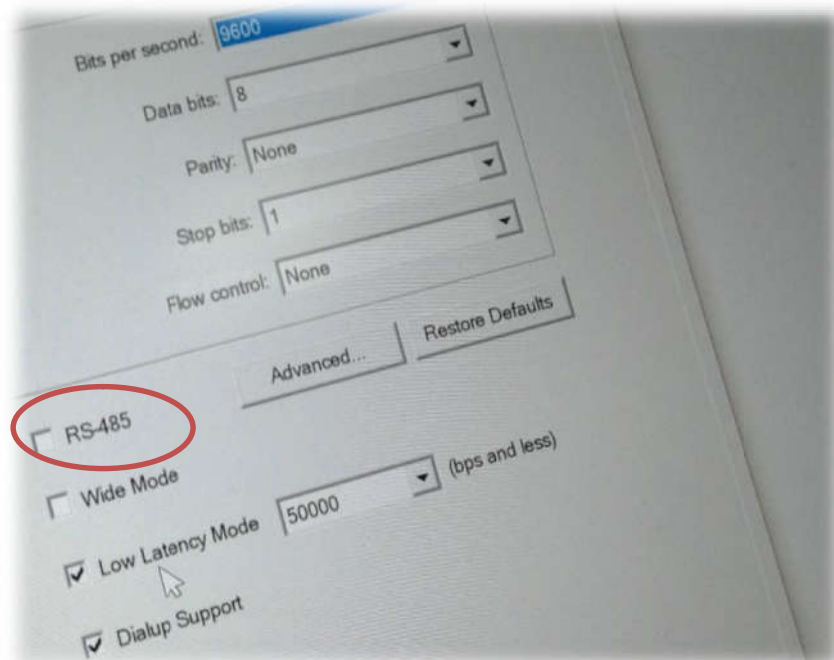


6. click "Port Settings", There are three mode of work switching in the product



### Important:

If you only see one RS-485 on the interface after installation, that means the installation is not success, you will need to update and install again on the driver path.



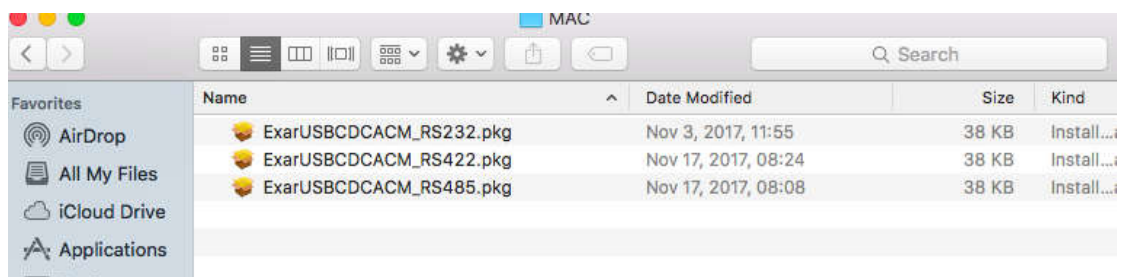
# Installation Guide MAC OS X

## Important:

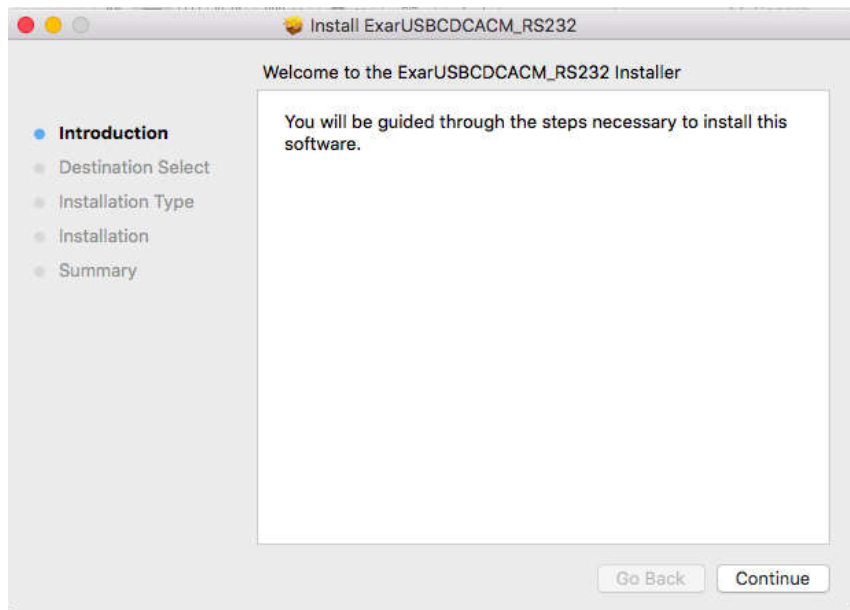
Remove the drivers that came with the system before installing the drivers for the product,  
Open the terminal on the apple system and enter the dos command to remove the old driver

1. Disconnect any of our USB UARTs from the system.
2. change directory and remove the driver  
`cd /System/Library/Extensions`  
`sudo rm -R ExarUSBCDCACM.kext` (no "/" after .kext)  
if the driver file is present, provide the root password  
`cd /Library/Extensions`  
`sudo rm -R ExarUSBCDCACM.kext` (no "/" after .kext)
3. Reboot the system
4. Connect our USB UART
5. Confirm our USB UART is using the CDC driver  
`ls -ltr /dev`  
You should see our USB UART listed as:  
`tty.usbmodemnnnn` where nnnn is the device / port identifier and  
`cu.usbmodemnnnn`
6. Disconnect our USB UART from the system
7. Reboot the system
8. Run the installer
9. Reboot the system
10. Connect our USB UART, confirm our custom driver is loaded:  
You should see our USB UART listed as:  
`tty.xrusbmodemnnnn` where nnnn is the device / port identifier and  
`cu.xrusbmodemnnnn`

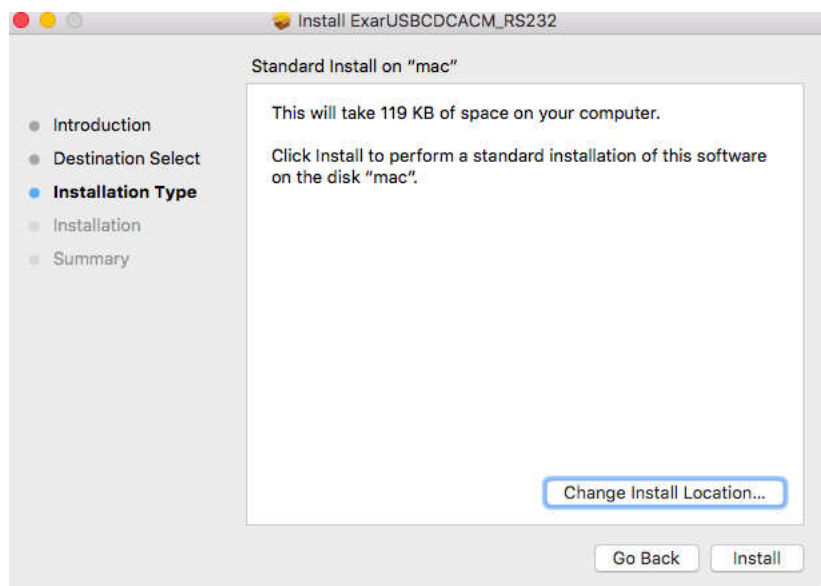
1. install the driver on the MAC you simply click on the .mpkg that matches your version of OS  
X.Select the appropriate driver to install based on the product's usage requirements



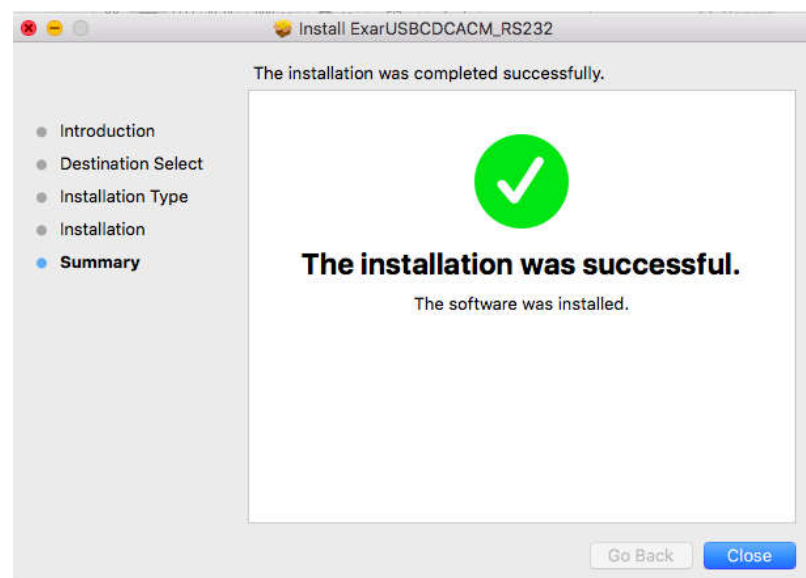
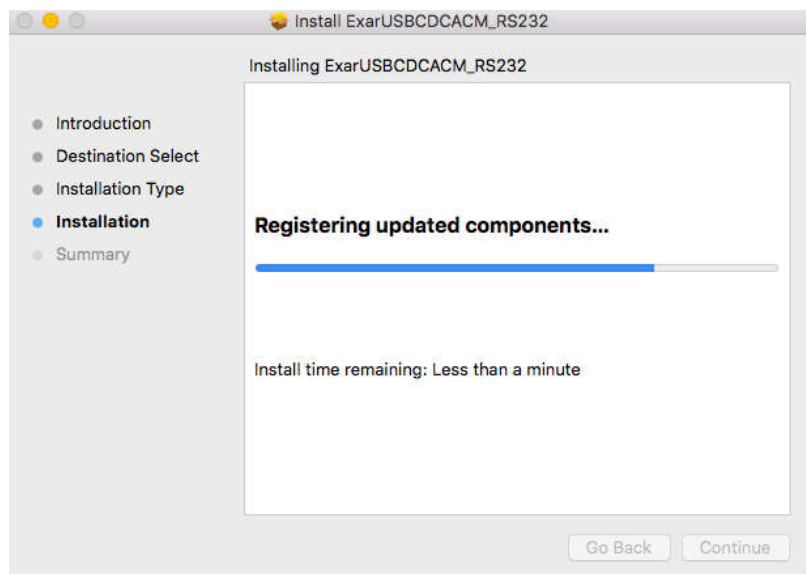
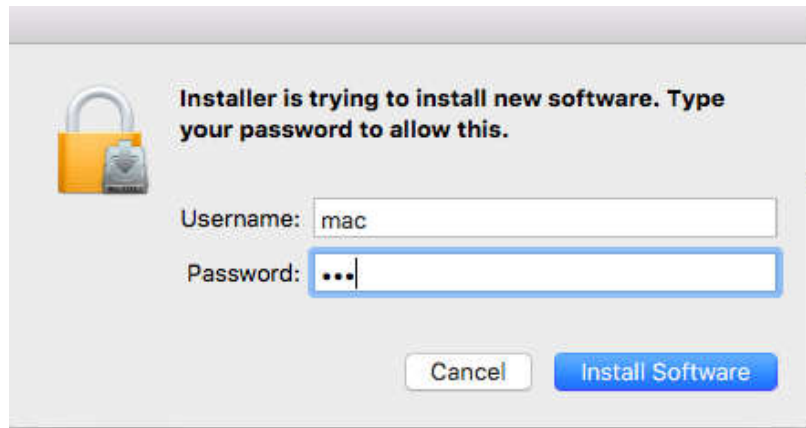
2. Let's choose to install the RS232 application,, click "EXarUSBCDCAVM.RS232.PKG ",The following pop-up will appear:



3. Select continue to install the driver



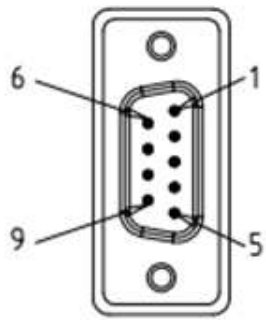
4. Select Install. At this point you may be asked for your password to authenticate the installation. This is just the same as you would do to log into the machine to begin using it.



5. After authentication select close to complete the installation.
6. then plug in USB cable and Restart MAC .

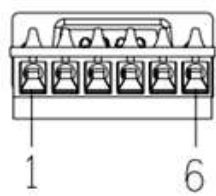
# Serial Port Pin Assignments

The Proudct series uses male DB9 connectors,Pin assignments are shown in the following diagram.



Pin	RS-232	RS-422/485	RS-485
1	DCD	TXD-	Data-
2	RXD	TXD+	Data+
3	TXD	RXD+	/
4	DTR	RXD-	/
5	GND	GND	GND
6	DSR	/	/
7	RTS	/	/
8	CTS	/	/
9	RI	/	/

The Proudct comes with a DB9 to terminal block converter,with pin assignments as shown below:



Pin	Rs232	Rs485-422	Rs485
1	RXD	TXD+	Data+
2	/	TXD-	Data-
3	GND	GND	GND
4	/	/	/
5	TXD	RXD+	/
6	/	RXD-	/